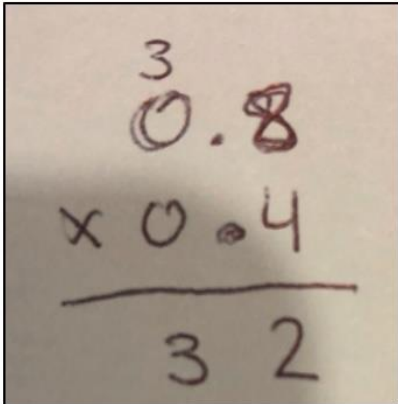
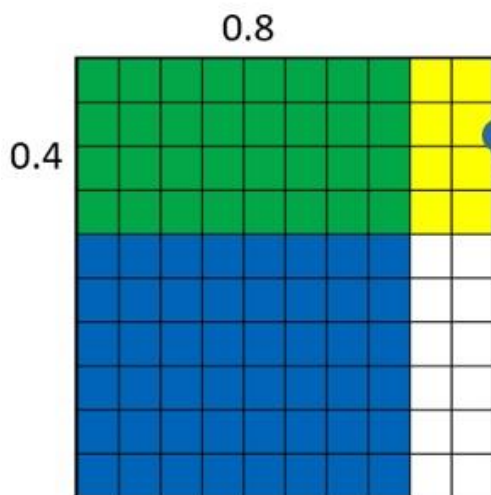


Using the area model to multiply with decimals - Example: 0.8×0.4



Hmmm. Do I have to line up decimals for this problem? And, where in the world does the decimal go at the end??



Let's see. I break a whole into rows and columns of 10 tenths each so I have 100 hundredths. If I shade 8 tenths, I know that's what I'm starting with. Then I'm figuring out what 4 tenths of that amount is. I can count and actually see how many little hundredths I have. I can see that the intersection of the blue and yellow (which makes green) is the answer to the question *What is 0.8×0.4 ?*